

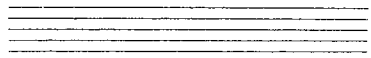
lesson 1

**THE STAFF**

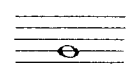
**STAFF**

The lines and spaces on which music is written

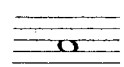
Notes are placed on both the lines and the spaces of the staff to show the pitch of the notes. The higher the note on the staff, the higher the pitch (high or low sound).



This is a note on a **LINE**



This is a note on a **SPACE**



is higher than

is lower than

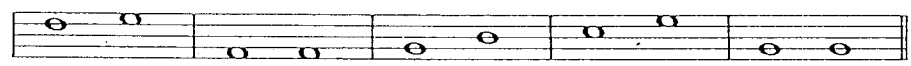
is the same as



Indicate whether the second note is higher, lower or the same as the first note of each set.



1. .... 2. .... 3. .... 4. .... 5. ....



6. .... 7. .... 8. .... 9. .... 10. ....

**NOTE:** Answers to all Quiz Questions may be found in text material preceding the Quiz.



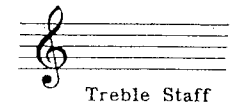
lesson 2

**THE LINES OF THE TREBLE STAFF**

This is a **TREBLE CLEF**



A staff with a Treble Clef sign is called a **Treble Staff**. High notes are placed on the Treble Staff.



The lines of the Treble Staff are



A saying to help you remember the lines of the Treble Staff is:

**Every Good Boy Does Fine**

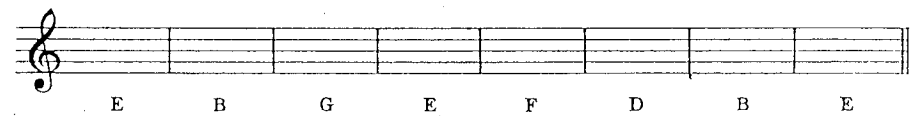


Write in the letter names of these notes.



.....

Draw the correct line note over each letter name.



102

